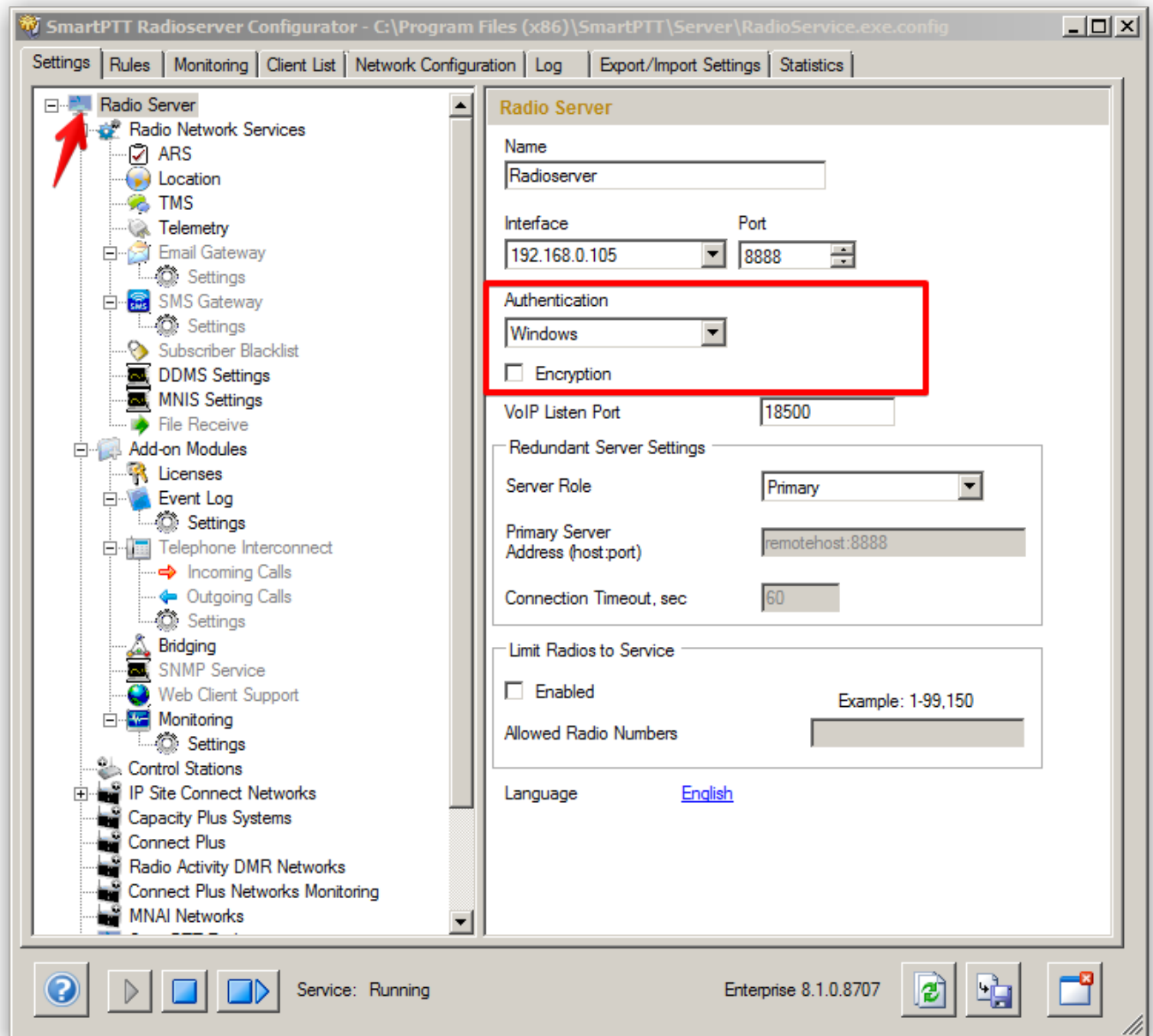


Brief description of the secure connection
SmartPTT Dispatcher to Radioserver



Authentication function is used to allow use Windows accounts to connect Dispatcher to Radioserver.

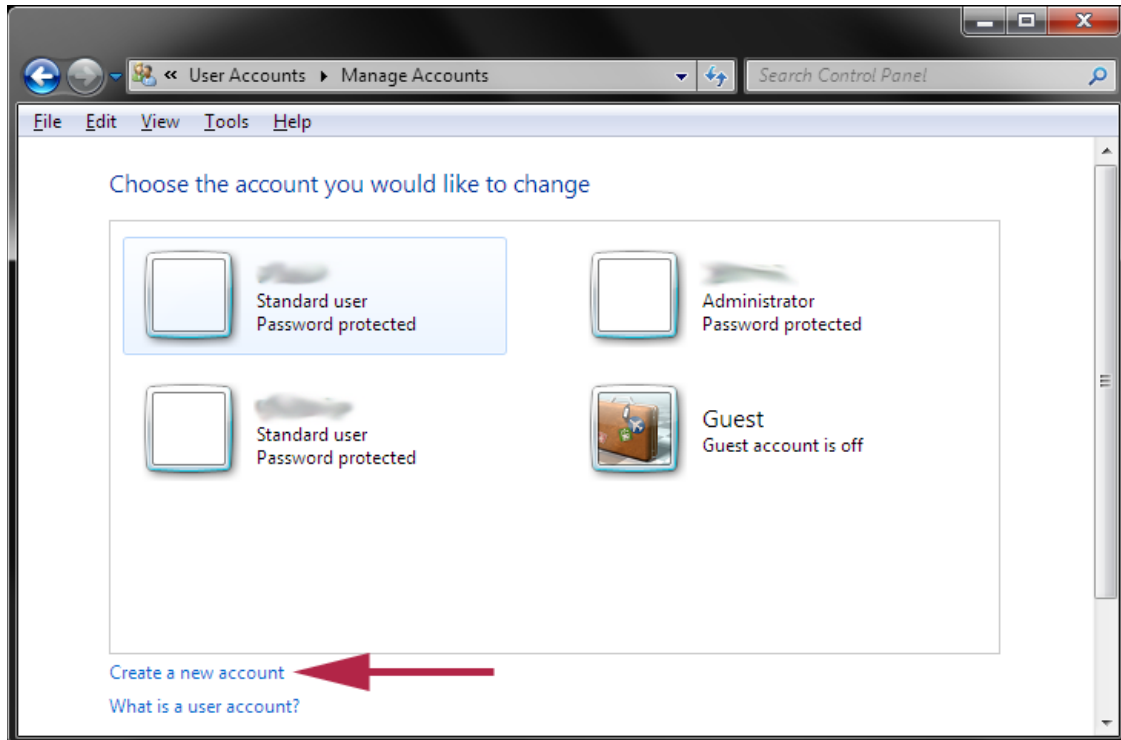
To configure it just do few simple steps:

1. Enable authentication option (Autentication -> Windows) if necessary, you can enable encryption channel between Dispatcher and Radioserver.

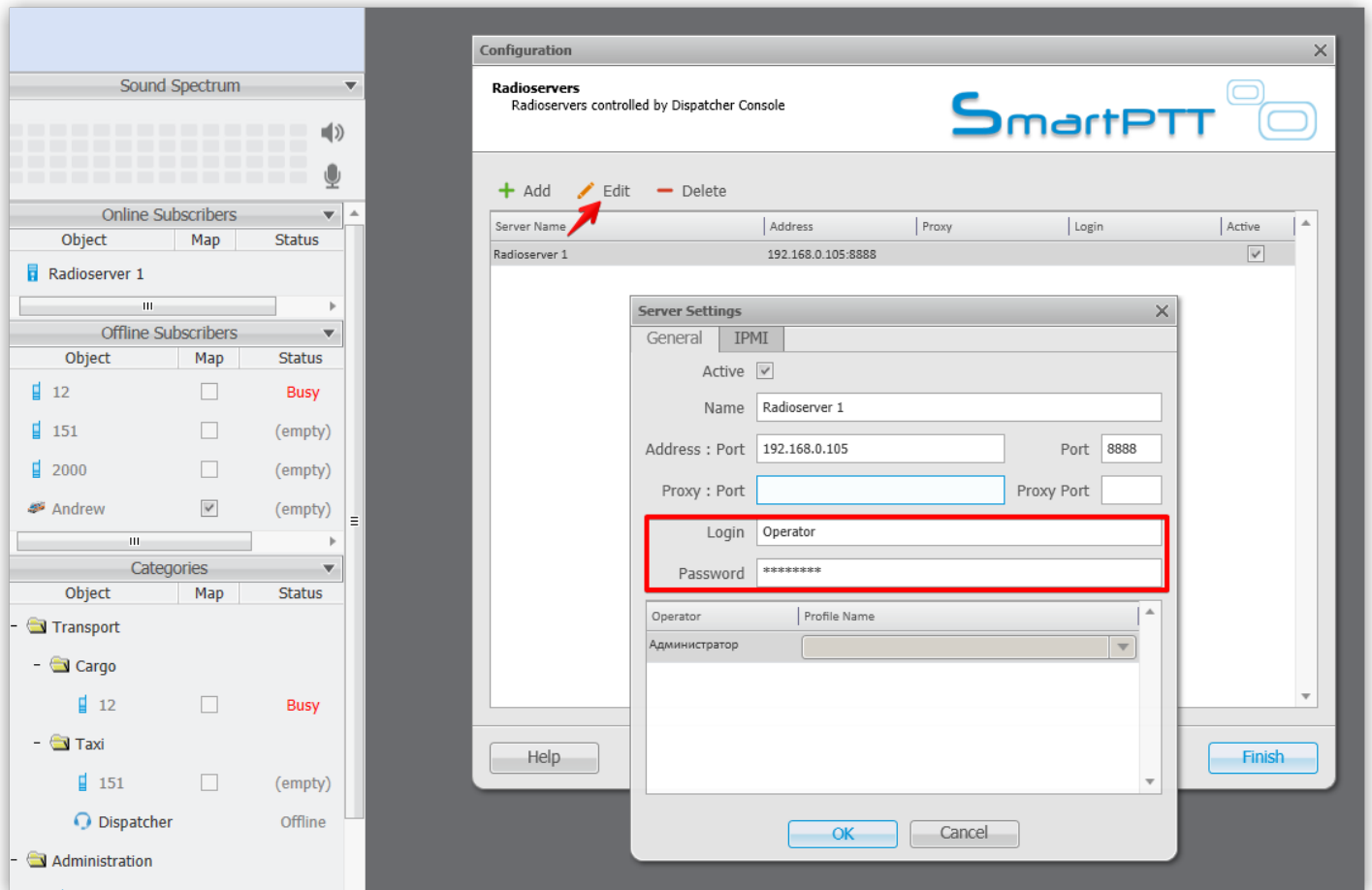


2. Create a user account on Windows server where Radioserver installed (types: user or administrator only)

- To open User Accounts, click the Start button , click Control Panel, click User Accounts and Family Safety, and then click User Accounts.
- Click Manage another account.  If you're prompted for an administrator password or confirmation, type the password or provide confirmation.
- Click Create a new account.
- Type the name you want (for example "Operator") to give the user account, click an account type, and then click Create Account.



3. Set the same login and password in Radioserver General settings in Dispatcher (Settings -> Radioservers -> Edit).



Now Dispatcher connected to Radioserver using Windows authentication.