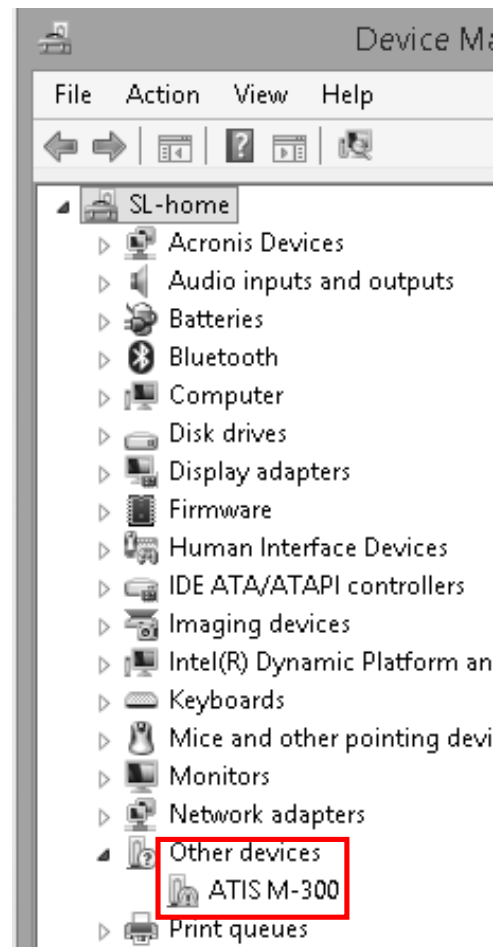
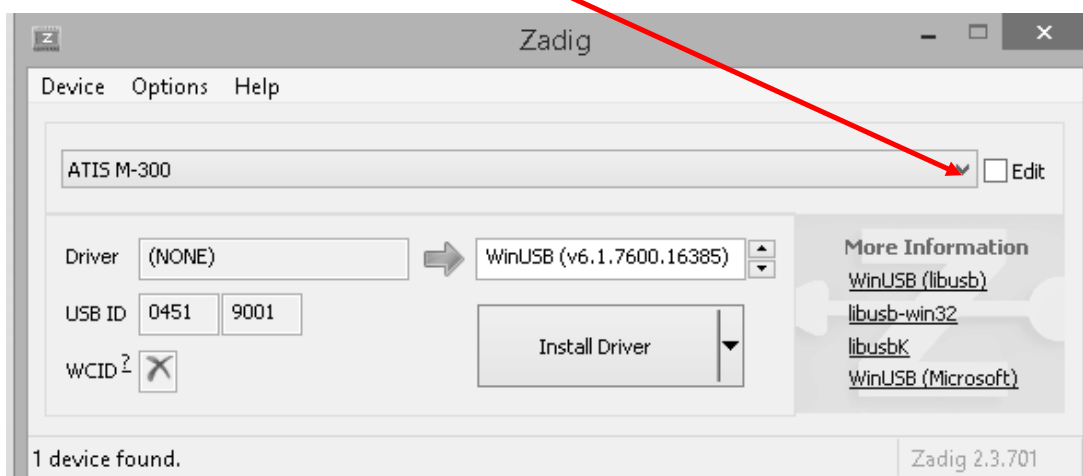


How to install RG-1000e driver

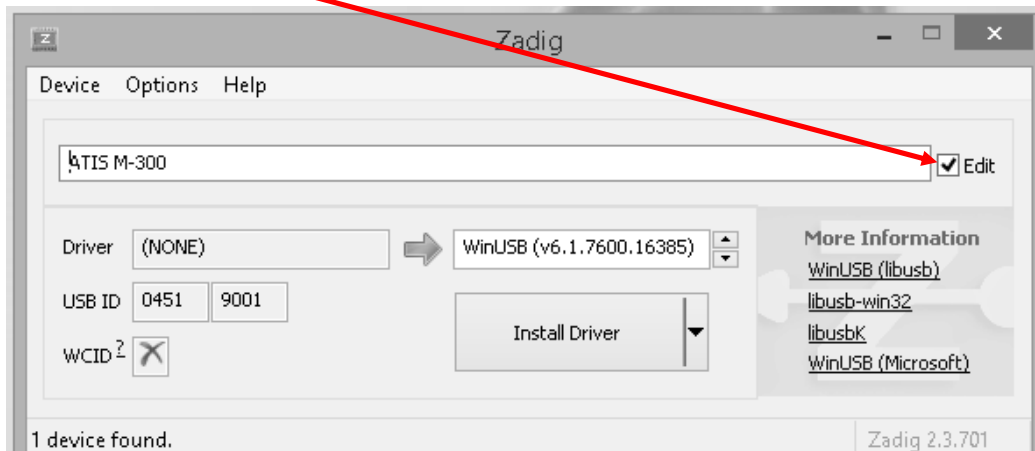
- Download from <http://zadig.akeo.ie/> Zagid 2.3 softool.
- Locate Zagid 2.3 to a desirable folder. Installation is not required.
- Connect RG-1000e to PC USB port and turn-on RG-1000e.
- Open PC Device Manager. You may see **Other devices - ATIS M-300**.



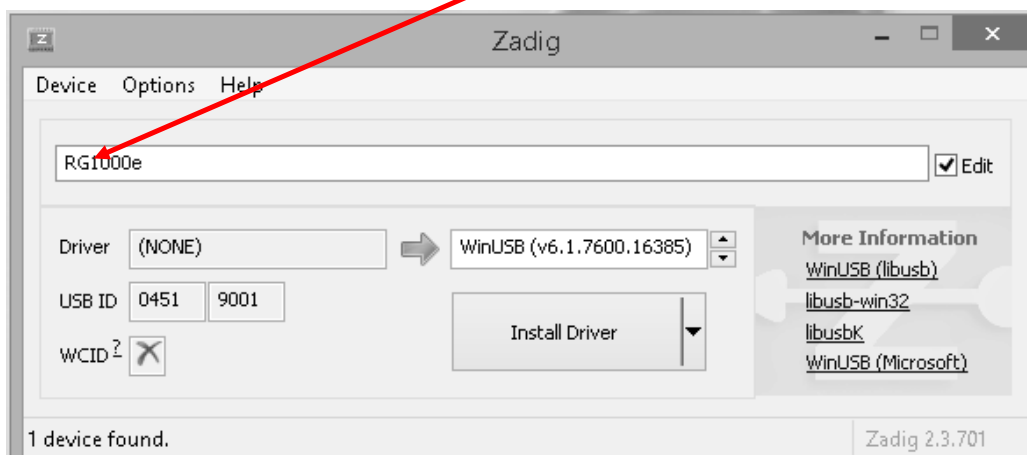
- run **Zadig** and select target device **ATIS M-300**



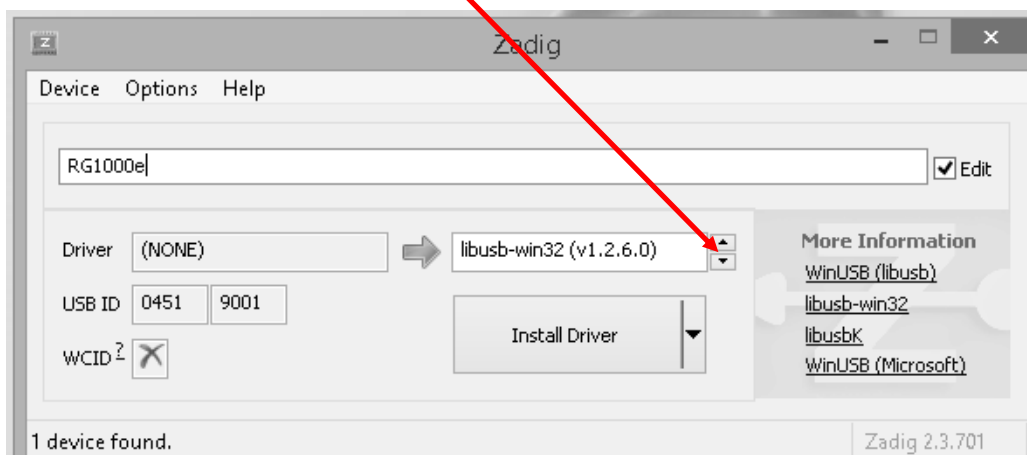
- check-on **Edit** box



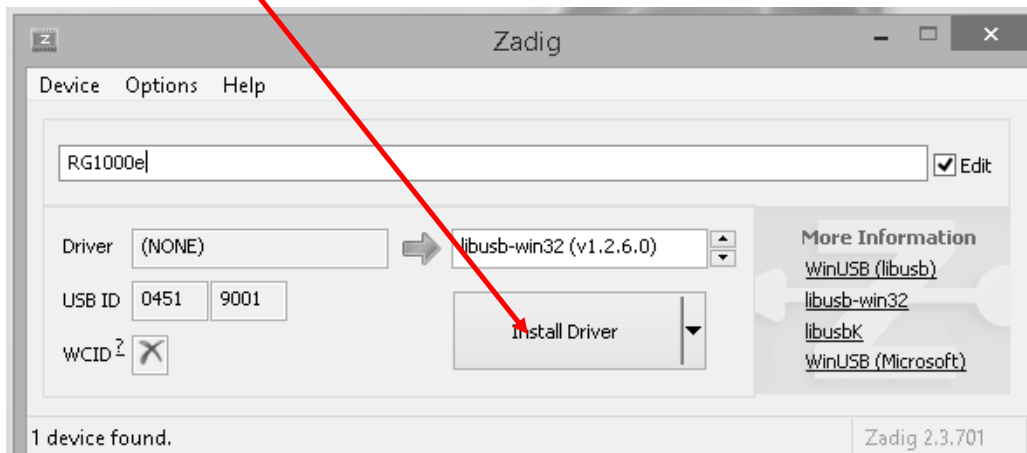
- Delete ATIS M-300 and type **RG1000e**



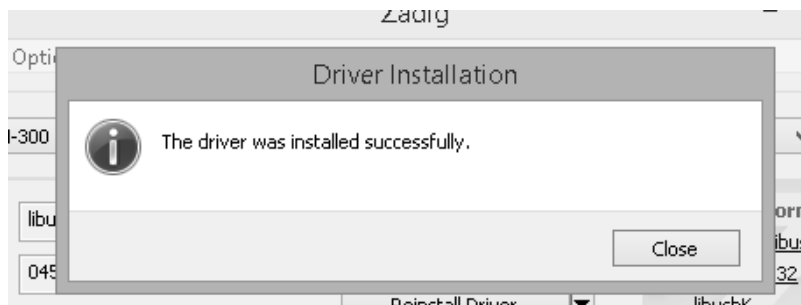
- Select target driver **libusb-win32 (v1.2.6.0)**



- Click **Install Driver**



- If everything is ok you should see this pop-up message



- Open PC Device Manager. You may see **RG-1000e** device.

